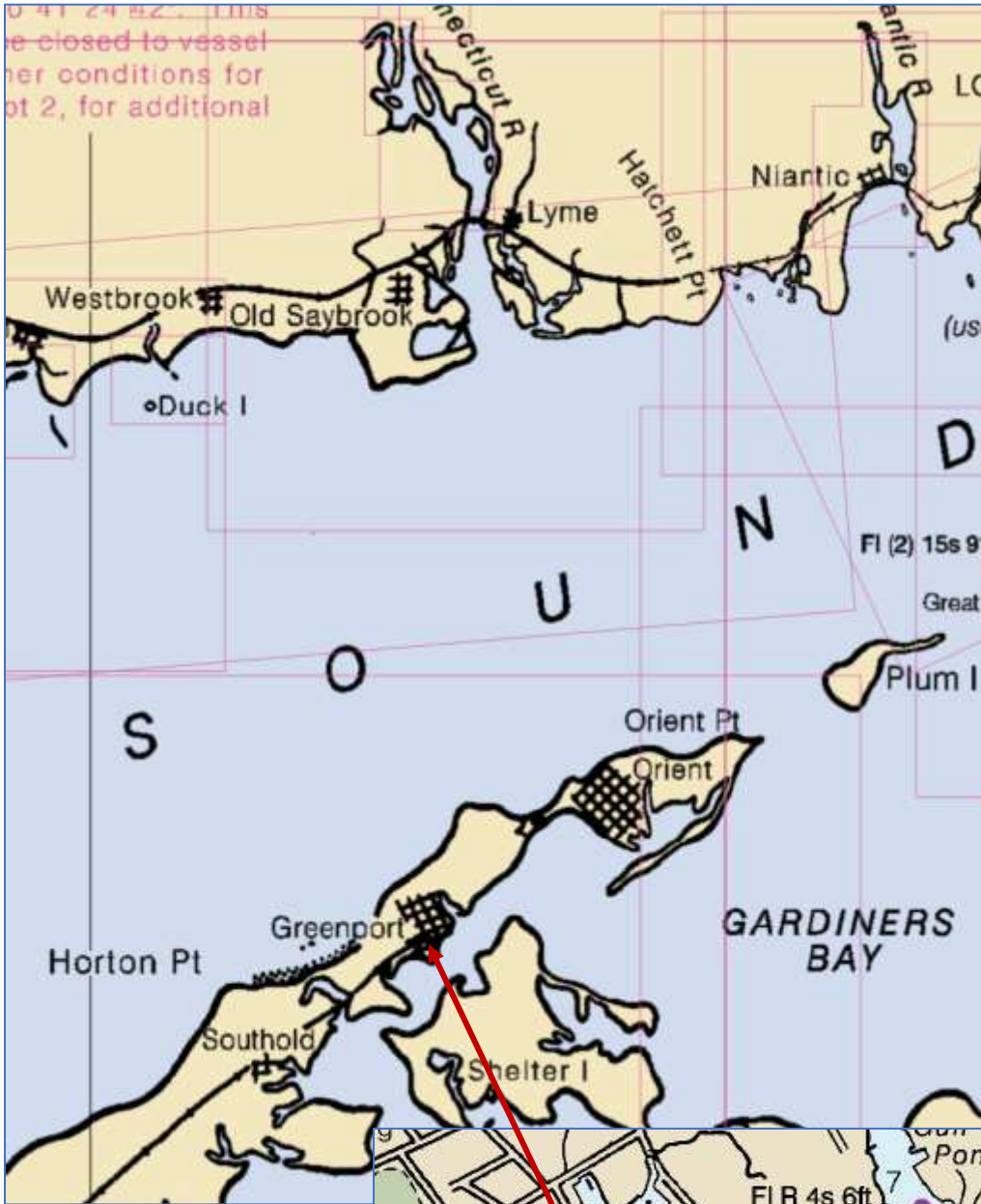


Townsend Manor Inn and Marina <http://www.townsendinn.com/Marina> Greenport LI NY

Where is it?



We budget 3 ½ hours from Chester CT to Greenport LI NY.

It takes us about 1 ¼ hours to get from Chester to the mouth of the river, so the trip across to Greenport is about 2 1/4 hours.

Note: our top speed is 15 kts.





Pool

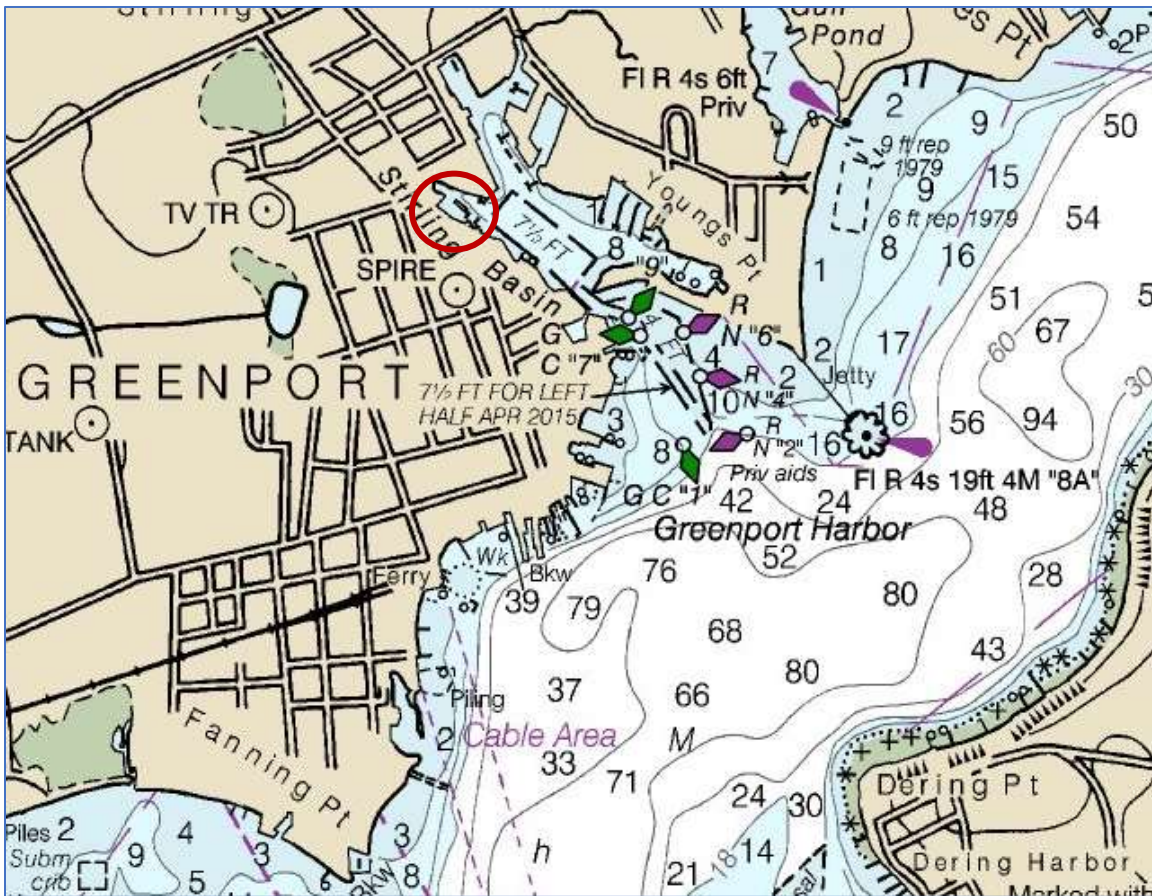
Manor House

Boat Basin



Breakwater

Claudio's



May 25 - June 21 | Sept. 4 - Oct. 8
TRANSIENT DOCKAGE RATES

25' Minimum
 \$2.00 per foot Monday - Thursday
 \$3.25 per foot Friday - Sunday
 2 WEEK MINIMUM RATE
 \$1.75 per foot
 1 MONTH MINIMUM RATE
 \$1.25 per foot
 SEASONAL RATE
 \$150.00 per foot per season
 -25'MINIMUM-



June 22 - Sept. 3
TRANSIENT DOCKAGE RATES

25' Minimum
 \$3.50 per foot Monday-Thursday
 \$4.00 per foot Friday - Sunday & July
 4th
 2 WEEK MINIMUM RATE
 \$3.00 per foot
 1 MONTH MINIMUM RATE
 \$2.50 per foot
 SEASONAL RATE
 \$150.00 per foot per season
 -25'MINIMUM-

Contact Us

Townsend Manor Inn

714 Main Street
 Greenport, NY 11944

P: 631-477-2000

F: 631-477-2371

E: info@townsendinn.com